

# Anti-CLDN18.2 hlgG1 Reference Antibody (IMAB362)

## Product Information

<b>Product Name</b>	Anti-CLDN18.2 hlgG1 Reference Antibody (IMAB362)
<b>Storage temp.</b>	Store at 2-8°C short term (1-2 weeks).Store at ≤ -20°C long term. Avoid repeated freeze-thaw.
<b>Catalog# / Size</b>	GM-87352MAB-1mg / 1 mg GM-87352MAB-5mg / 5 mg GM-87352MAB-25mg / 25 mg GM-87352MAB-50mg / 50 mg GM-87352MAB-100mg / 100 mg

## Antibody Information

<b>Expression System</b>	CHO
<b>Aggregation</b>	< 5% as determined by SEC-HPLC
<b>Purity</b>	> 95% as determined by SDS-PAGE
<b>Endotoxin</b>	< 1 EU/mg, determined by LAL gel clotting assay
<b>Sterility</b>	0.2 μm Filtered
<b>Target</b>	CLDN18.2
<b>Clone</b>	IMAB362
<b>Alternative Names</b>	/
<b>Source/Isotype</b>	Human IgG1(K214R/D356E/L358M),Kappa
<b>Application</b>	/
<b>Description</b>	The claudin18.2 (CLDN18.2) protein, an isoform of claudin18, a member of the tight junction protein family, is a highly selective biomarker with limited expression in normal tissues and often abnormal expression during the occurrence and development of various primary malignant tumors, such as gastric cancer/gastroesophageal junction (GC/GEJ) cancer, breast cancer, colon cancer, liver cancer, head and neck cancer, bronchial cancer and non-small-cell lung cancer. CLDN18.2 participates in the proliferation, differentiation and migration of tumor cells. Recent studies have identified CLDN18.2 expression as a potential specific marker for the diagnosis and treatment of these tumors. With its specific expression pattern, CLDN18.2 has become a unique molecule for targeted therapy in different cancers, especially in GC; for example, agents such as

Version:3.1

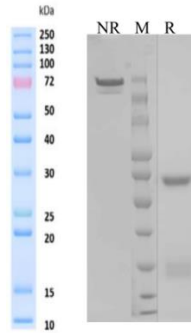
zolbetuximab (claudiximab, IMAB362), a monoclonal antibody (mAb) against CLDN18.2, have been developed.

**Formulation**

phosphate-buffered solution, pH 7.4.

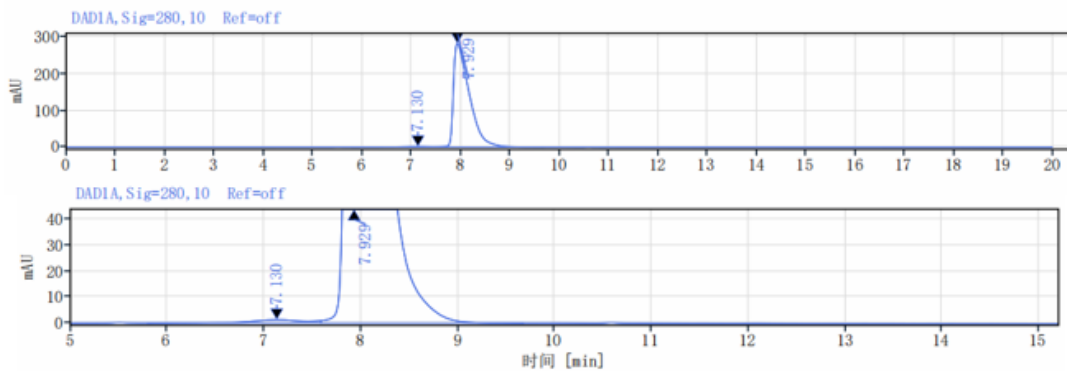
**Data Examples**

**SDS-PAGE**



On SDS-PAGE under reducing (R)/non-reducing(N-R) condition. The gel was stained overnight with Coomassie Blue. The purity of the protein is greater than 95%.

**SEC-HPLC**



The purity of this product is more than 95% verified by SEC-HPLC